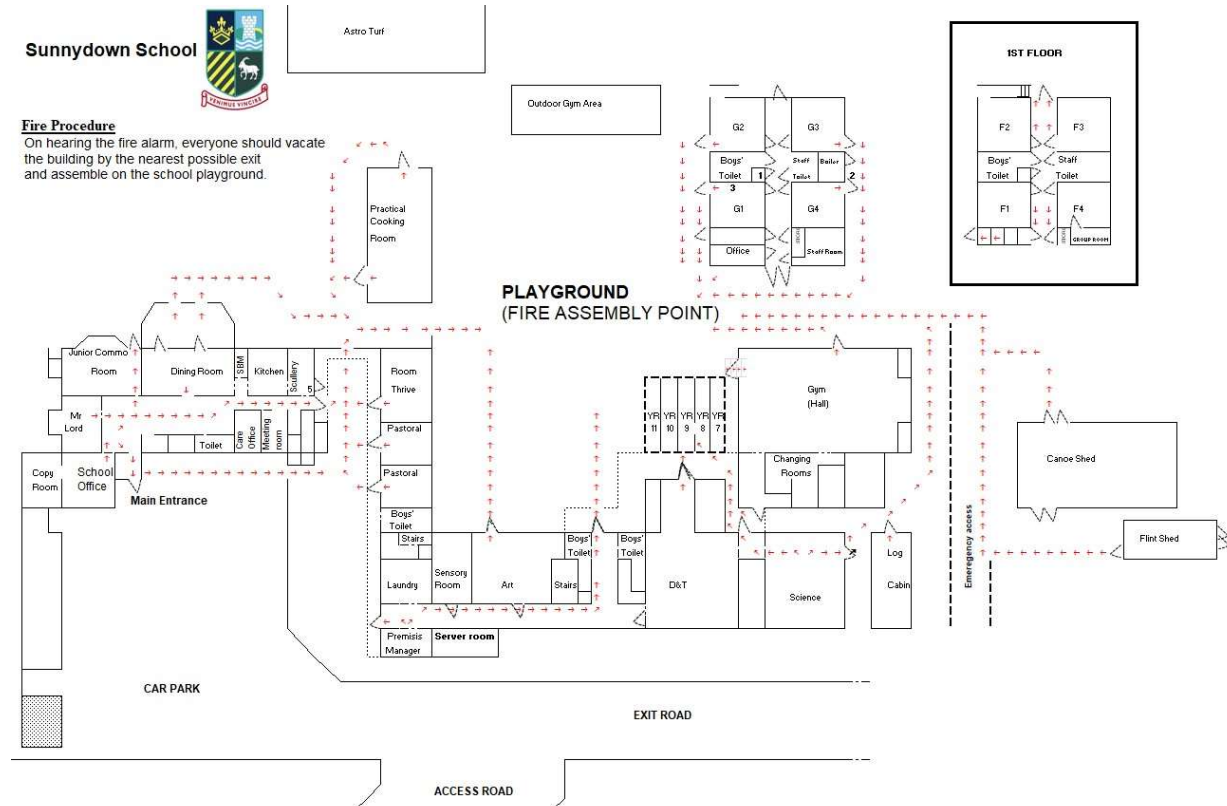




The area in red is the school grounds and buildings which is the area we are requesting the license to cover.





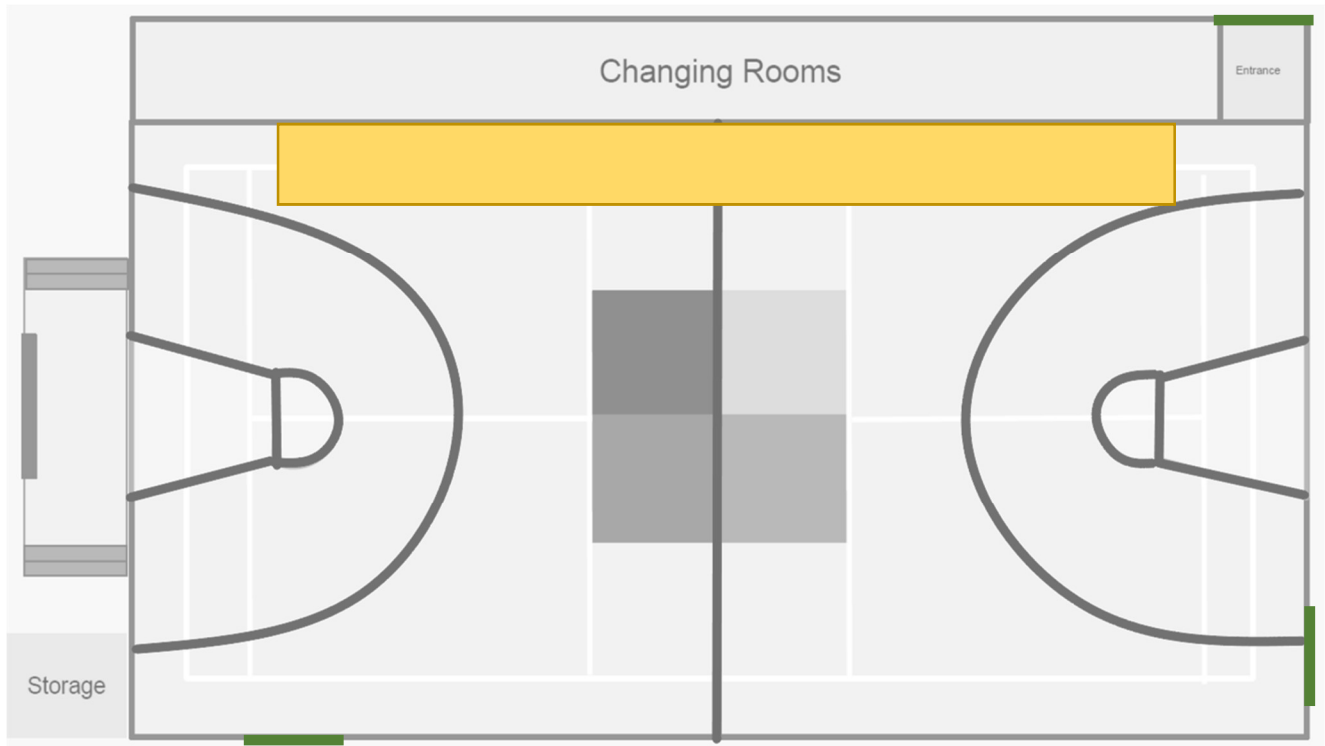
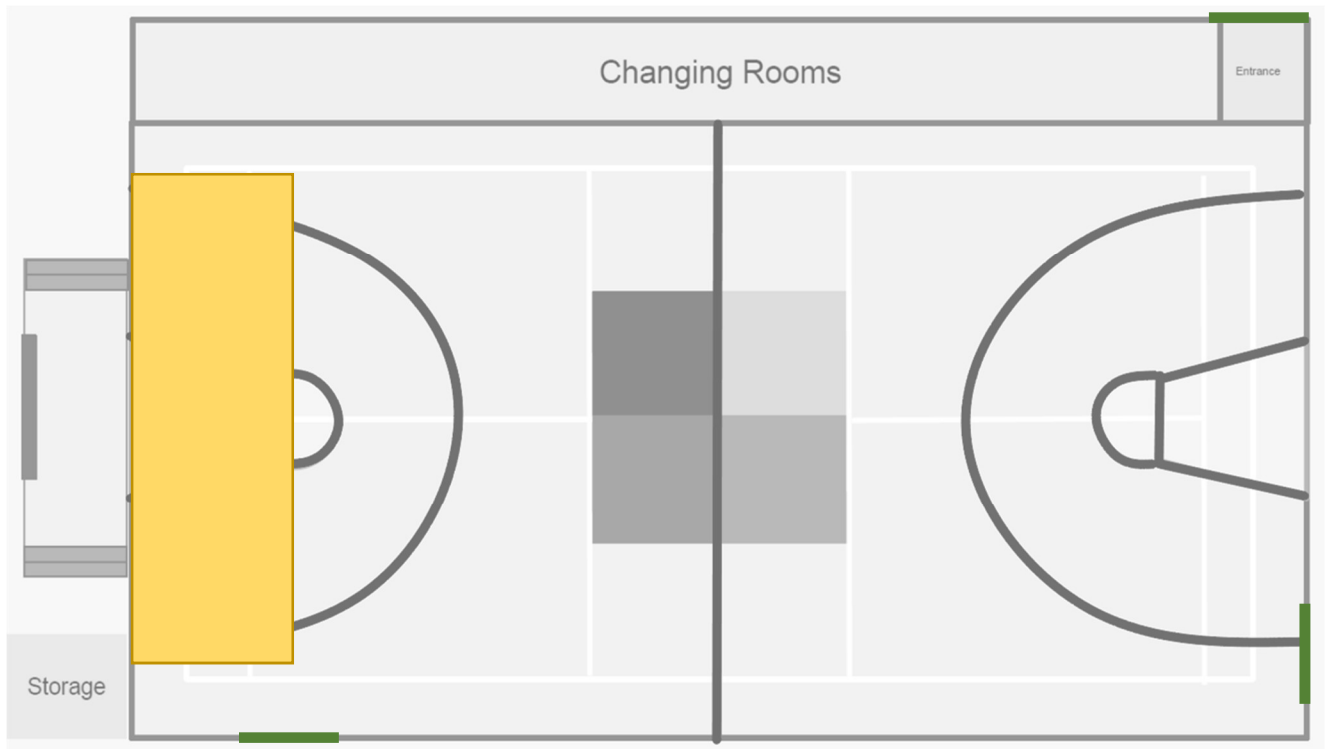
# Sunnydown School

## Fire Procedure

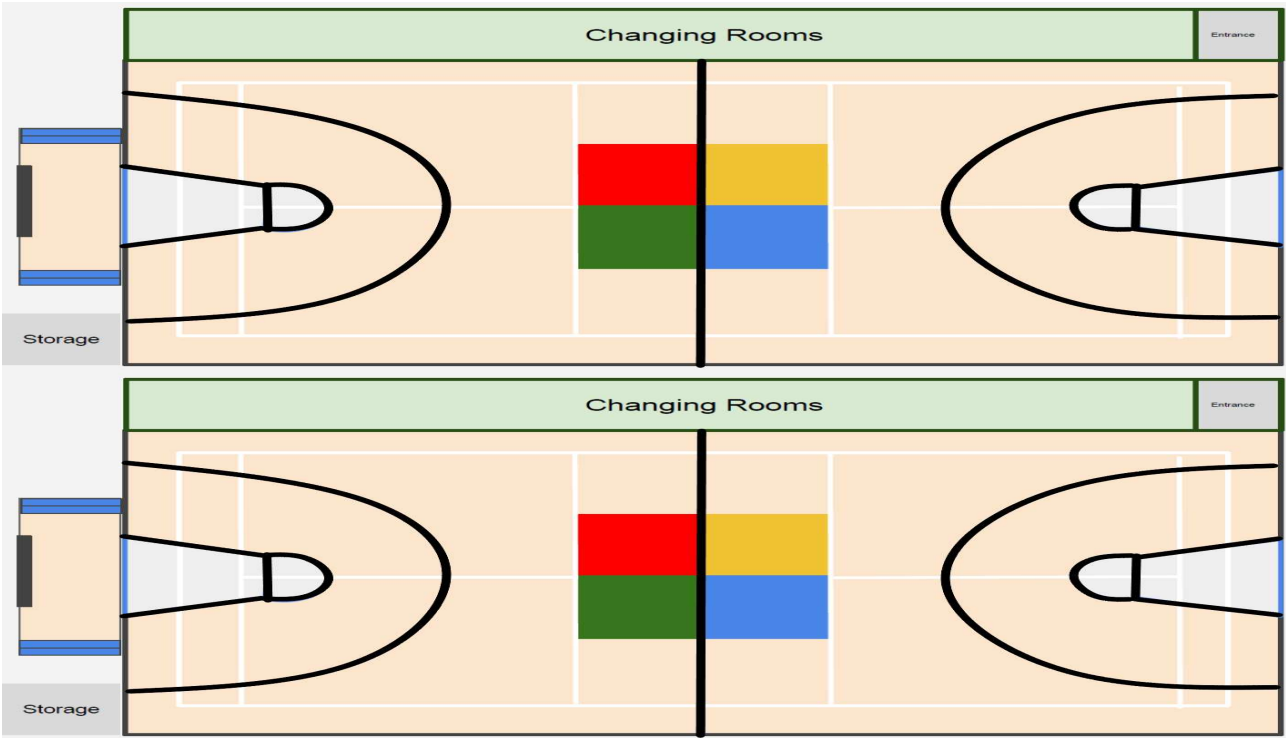
On hearing the fire alarm, everyone should vacate the building by the nearest possible exit and assemble on the school playground.



A) Plays – The two possible stage positions in the Gym (Hall) are shown in yellow. Exits are indicated by a green line

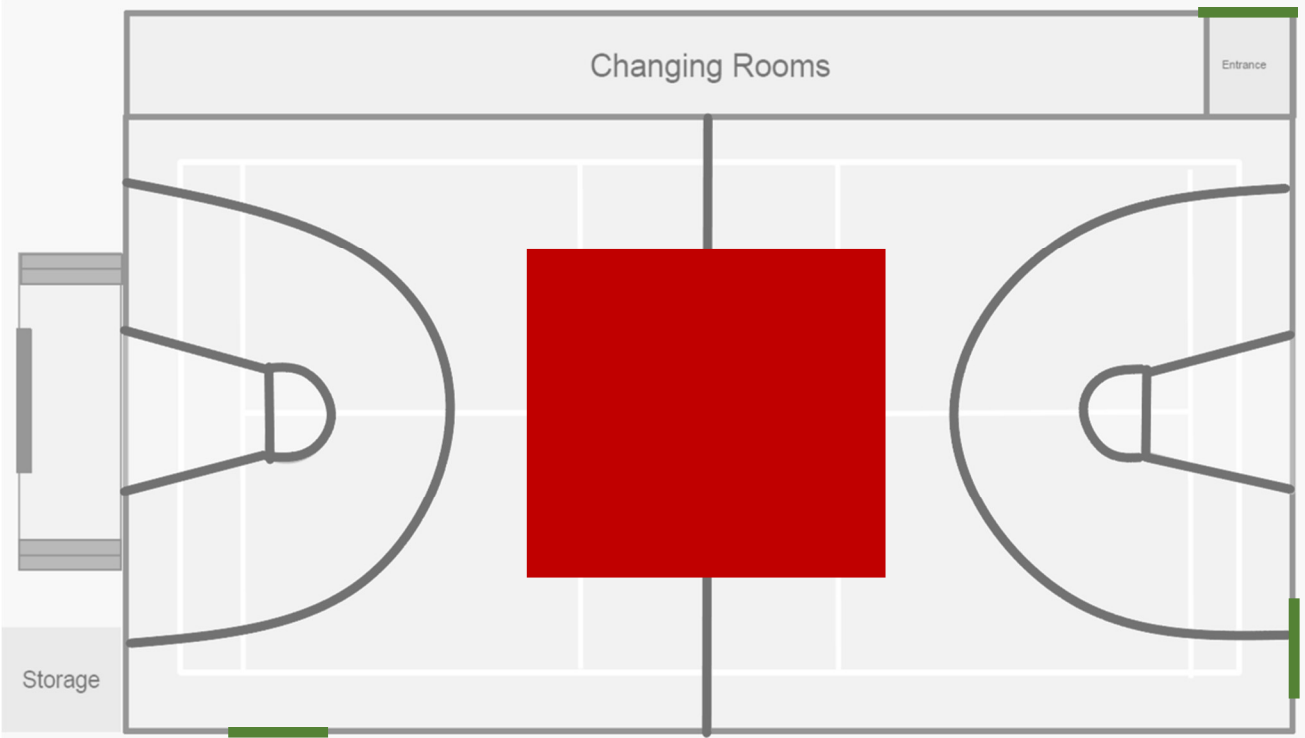


C) Indoor sporting events – There will be lines marked on the floor in the Gym (Hall) indicating the courts for the specific sport.



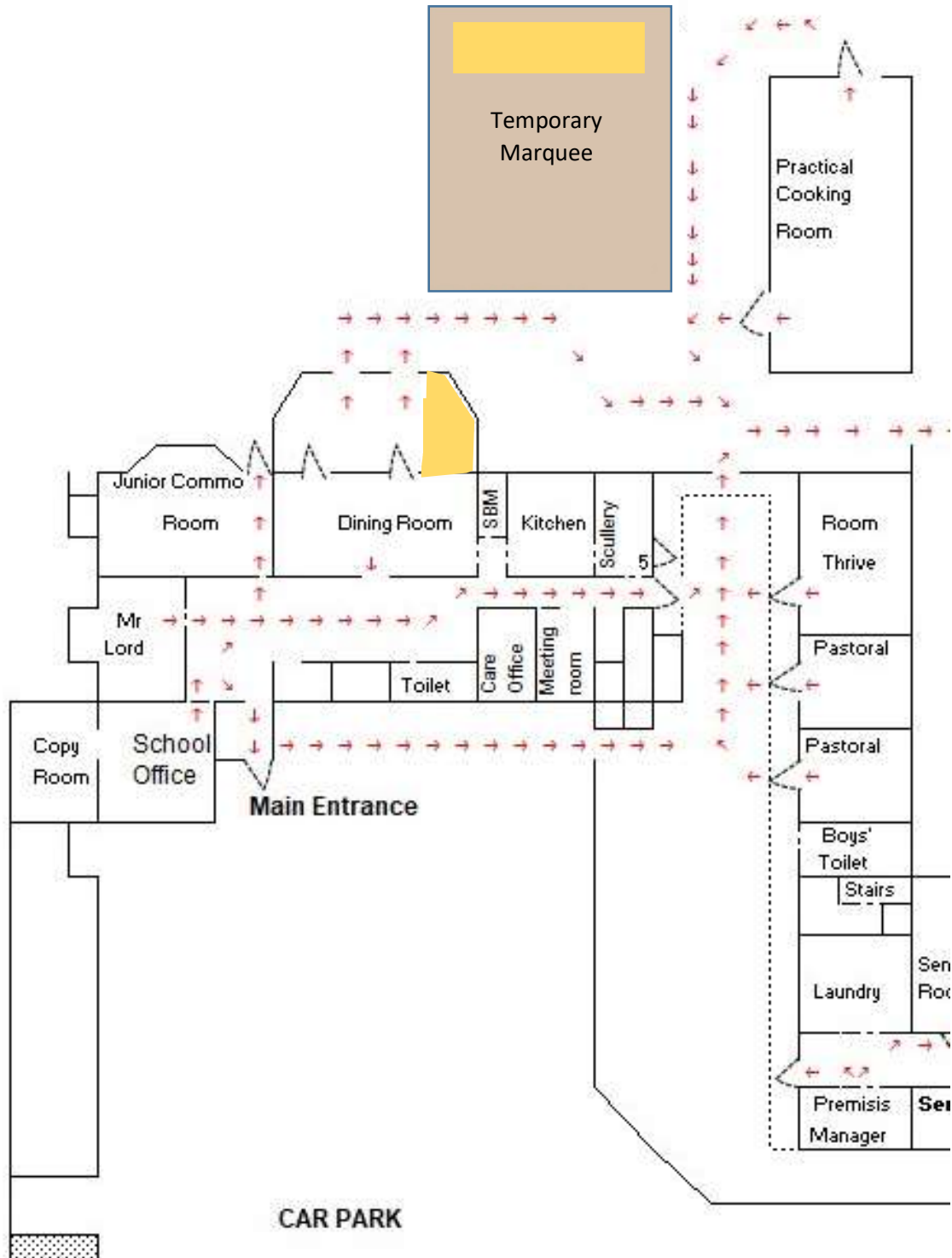
D) Wrestling or Boxing Entertainment

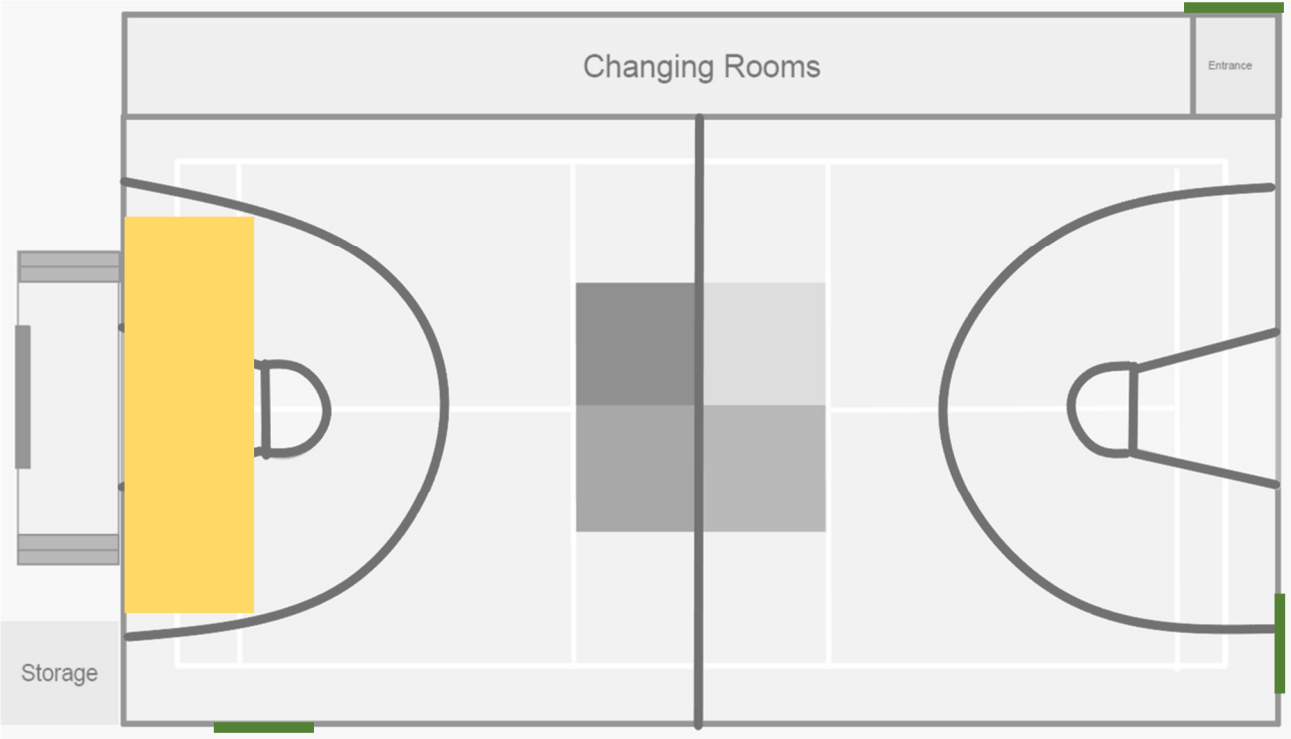
The ring area in the Gym (Hall) is highlighted in red. Seating will be around this area with exits marked by a green line.



E) Live Music.

The Stage is highlighted in yellow in the Conservatory, Gym (Hall) and the temporary Marquee.





## J) Sale of Alcohol

The Bar areas are highlighted in blue for the Gym (Hall), the main building and the temporary marquee. Exits are highlighted in green in the Gym (Hall). Any alcohol will be stored behind the bar during the event and in a locked cupboard under the stairs or the outside locked fridge cupboard (both highlighted in purple) in the main building at any other time.

